

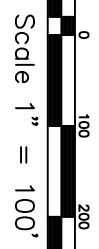
NOT WITHIN  
SANITATION  
DISTRICT

MAYBURY & POLAND  
SUBDIVISION

LR

**SURVEY CALLS**

CONC.MON.	BEARING	DISTANCE
N385-N386	S 69°24' E	1716.00'
N386-N387	N 30°47' E	424.39'
N387-N388	N 77°09' E	834.90'
N388-N389	N 89°11' E	612.40'
N389-N390	S 36°16' E	374.16'
N390-N178	S 62°48' W	503.20'
N178-N198	S 66°00' W	1393.88'
N198-N199	S 66°20' W	918.85'
Y199-S199	S 11°35' W	194.36'

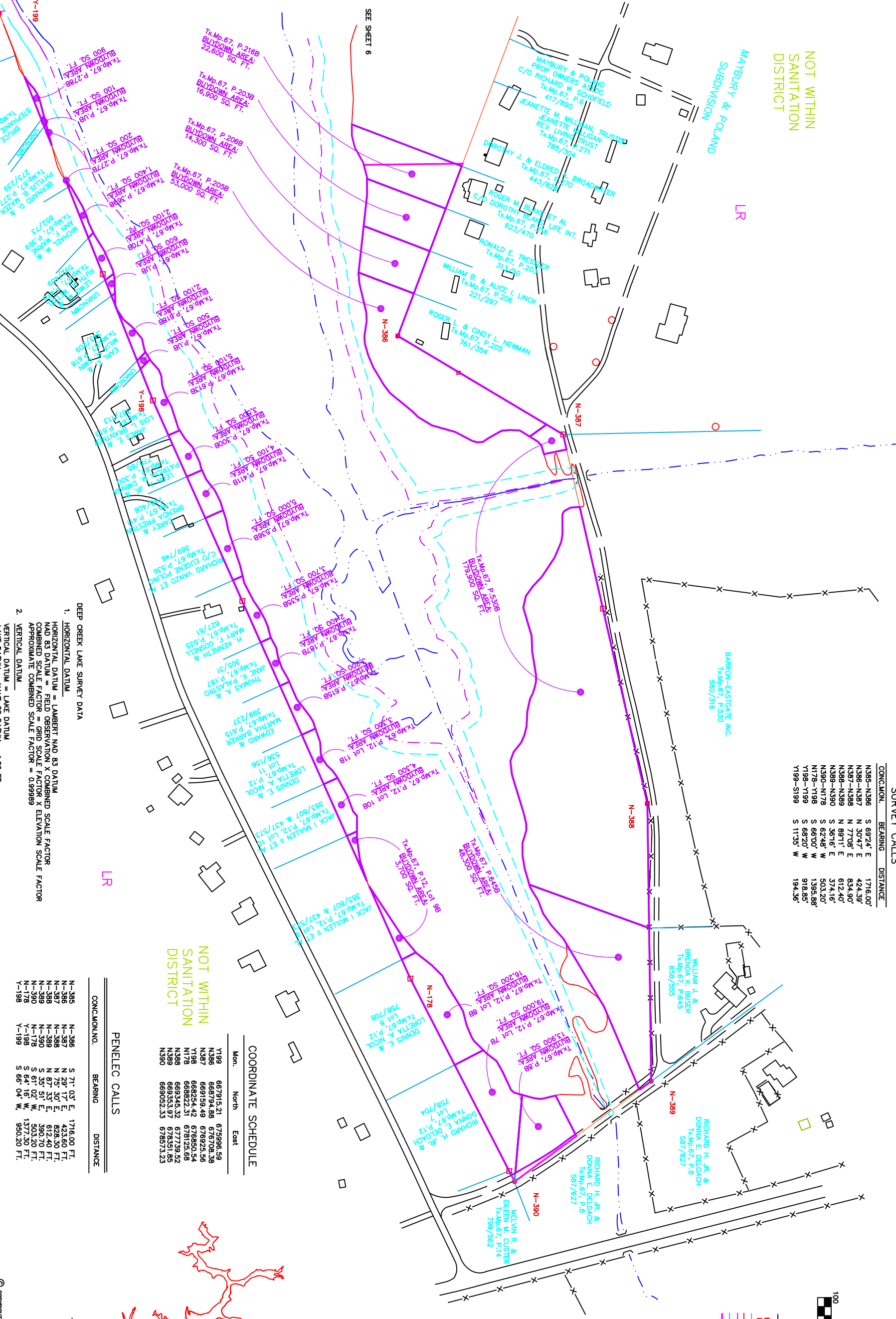


**LEGEND**

- CONCRETE MONUMENT SET
- CONCRETE MONUMENT FOUND
- MONUMENT LINE
- 2468 CONTOUR LINE
- 2462 CONTOUR LINE
- 25 FT. SAFETY LINE
- BUDOWN AREAS
- LR TOWN CENTER
- TR TOWN RESIDENTIAL
- MONUMENT TO BE SET
- CALCULATED MONUMENT LOCATIONS THAT CANNOT BE SET
- 1" REBAR WITH ALUMINUM CAP SET
- 2" BRASS DISC SET

CONTOURS ARE AT 2 FT. INTERVALS REFERENCED TO THE STAFF GAUGE AT THE PENSTOCK.

LR



SEE SHEET 6

SEE SHEET 4

**DEEP CREEK LAKE SURVEY DATA**

- HORIZONTAL DATUM  
HORIZONTAL DATUM = LAMBERT NAD 83 DATUM  
NAD 83 DATUM = FIELD OBSERVATION X COMBINED SCALE FACTOR  
COMBINED SCALE FACTOR = GRID SCALE FACTOR X ELEVATION SCALE FACTOR  
APPROXIMATE COMBINED SCALE FACTOR = 0.999989
- VERTICAL DATUM  
VERTICAL DATUM = LAKE DATUM - 1.80 FT.  
LAKE DATUM = NAVD 88 DATUM

NOT WITHIN  
SANITATION  
DISTRICT

PENELEC CALLS

CONC.MON.	BEARING	DISTANCE
N-385	S 71° 03' E	1716.00 FT.
N-386	N 29° 17' E	423.60 FT.
N-387	N 75° 30' E	828.30 FT.
N-388	N 87° 33' E	612.40 FT.
N-389	S 35° 51' E	390.70 FT.
N-390	S 61° 02' W	503.20 FT.
N-178	S 64° 16' W	1377.30 FT.
Y-198	S 66° 04' W	950.20 FT.

**COORDINATE SCHEDULE**

Mon.	North	East
Y199	667915.21	675996.59
N386	666794.86	676706.38
N387	669159.49	676925.56
Y198	668254.42	676850.54
N178	668622.51	676125.88
N388	669345.32	677738.52
N389	669353.97	678351.85
N390	669052.33	678973.23

DESIGNED BY: SUSAN N. EVANS PERARDO  
APPROVED BY: MORGAN C. FRANCE  
DATE: 6/30/00 at 3:30  
PROJECT: 123\CDATA\PROJECTS\DC12000\GRI\GRI.DWG

REVISIONS  
7/06/00  
4/06/01  
4/13/01

Prepared For:  
DEPT. OF GEN. SERVICES - REAL ESTATE  
STATE OF MARYLAND  
300 West Preston Street, Room 601  
Baltimore, Maryland 21201

Prepared By:  
MORGAN C. FRANCE, L.S., P.E.  
10 North Third Street  
Oakland, Maryland 21550  
(301) 334-2305

PROJECT: DEEP CREEK PROJECT  
BUY DOWN SURVEY  
SHEET NO.: 5  
DRAWING 5, GREEN GLADE COVE

© COPYRIGHT - 2000 BY  
MORGAN C. FRANCE, L.S., P.E.  
ALL RIGHTS RESERVED.

VICINITY MAP

